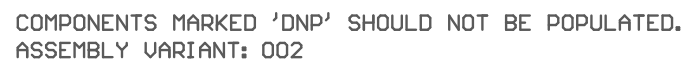
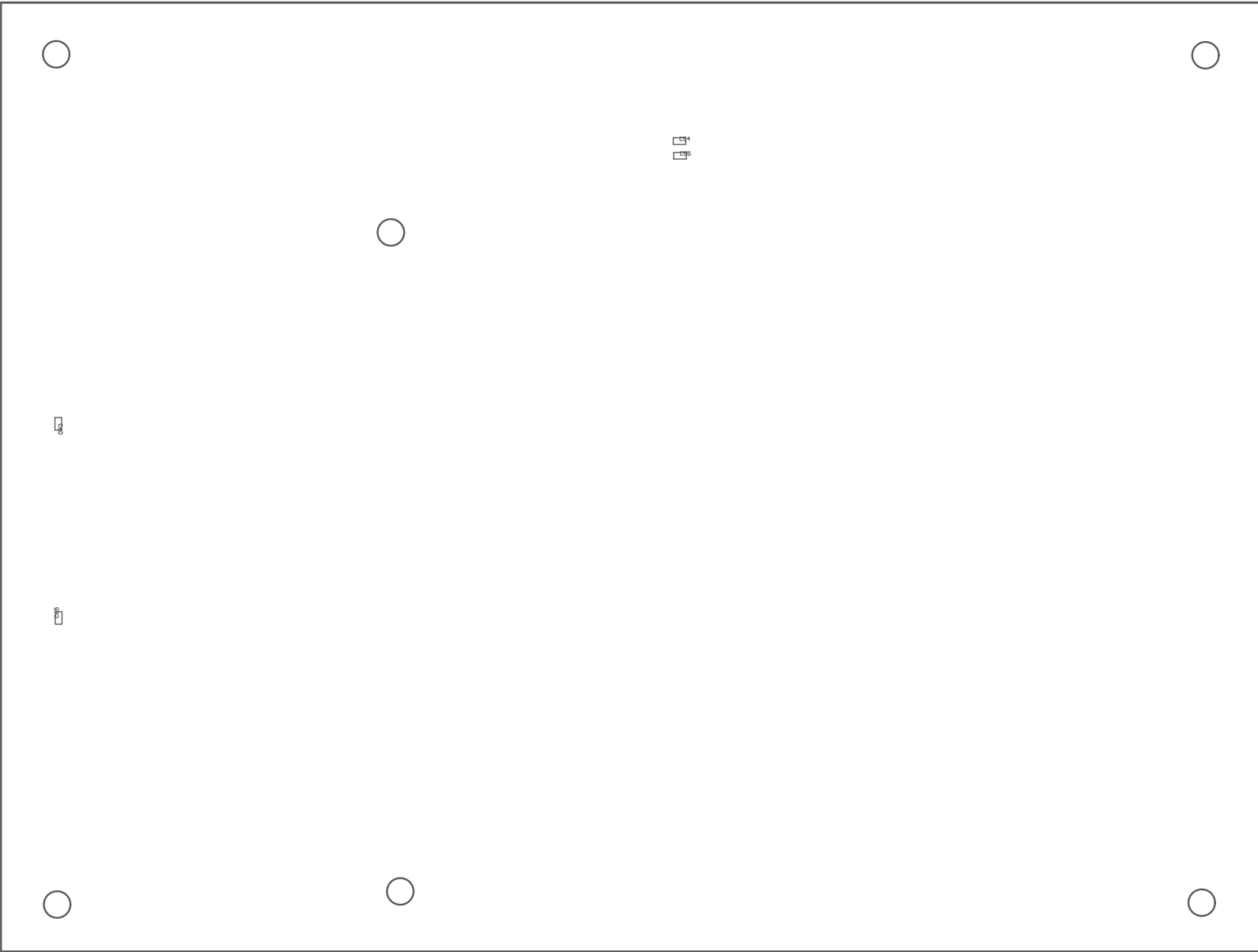


Z24 ■ These assemblies must comply with workmanship standards IPC-A-610 Class 2, unless otherwise specified.



PCB VIEWED FROM TOP SIDE	BOARD #: MD041	REV: A	SUN REV: Not in version control
PLOT NAME = Top Assembly Drawing	GENERATED : 6/22/2023 3:29:48 PM		TEXAS INSTRUMENTS



COMPONENTS MARKED 'DNP' SHOULD NOT BE POPULATED.
ASSEMBLY VARIANT: 002

PCB VIEWED FROM BOTTOM SIDE	BOARD #: MD041	REV: A	SUN REV: Not in version control
PLOT NAME = Bottom Assembly Drawing	GENERATED : 6/22/2023 3:29:49 PM	TEXAS INSTRUMENTS	